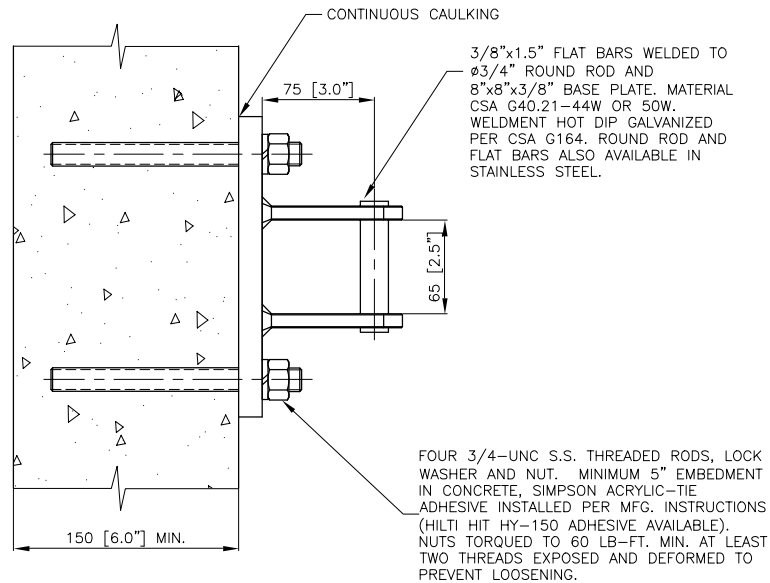
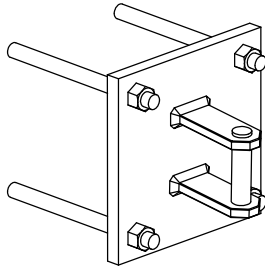




Roofers World Inc.

Rev.B, 27APR05

WALL ANCHOR RA-9 (Adhesive Bolt) Patent Pending



STANDARDS AND REGULATIONS:

ANCHORS CONFORM TO CSA Z91-02, Z271-98, ONT. MINISTRY OF LABOUR REG. 213/91, 145/00, 527/91, 859/90.

ANCHORS WILL RESIST 5,000 LB LOAD APPLIED IN ANY DIRECTION WITHOUT FRACTURE OR PULL OUT. MAXIMUM DEFLECTION UNDER 5,000 LB LOAD IS 0.1"

WHEN SUBJECTED TO A LOAD TESTING AFTER INSTALLATION MAXIMUM RECOMMENDED LOAD IS 3,000 LB FOR A PERIOD OF 5 MIN.

WELDING IN ACCORDANCE WITH CSA W47.1 AND W59, GALVANIZING PER CSA G164.

RNCA SERVICES:

WE ENGINEER, MANUFACTURE, LOAD TEST AND CERTIFY ALL FALL ARREST EQUIPMENT. WE ALSO DESIGN CUSTOM ANCHORS.

INSTALLATION:

FALL ARREST ROOF ANCHORS ARE INSTALLED PER CUSTOM SHOP DRAWING DETAIL AND IN LOCATIONS SHOWN ON THE ROOF LAYOUT DRAWING. THESE DRAWINGS CAN BE SUPPLIED ALONG WITH ANCHORS.

CAULKING AROUND THE ANCHOR BASE IS TYPICALLY SUFFICIENT WATER-PROOFING.

MAINTENANCE:

ALL ANCHORS ARE MAINTENANCE FREE. ANNUAL VISUAL INSPECTION IS REQUIRED PER CSA Z91-02, LOAD TESTING IS REQUIRED FOLLOWING INITIAL INSTALLATION AND AS DIRECTED BY THE ENGINEER FOLLOWING ANNUAL INSPECTIONS.

TYPICAL USE:

ON REINFORCED CONCRETE WALLS AND PARAPETS AS A TIE BACK FOR SUSPENDED EQUIPMENT AND PERSONAL LIFE LINE. MAXIMUM WORKING LOAD 1,250 LB. MINIMUM PULLOUT/FRACTURE LOAD 5,000 LB.

RNC Anchors Inc.

PHONE: 800-352-6147, 613-736-7654, FAX: 613-736-7737
www.roofersworld.com, e-mail: anchors@roofersworld.com, anchors@rnc.ca
www.rnc.ca