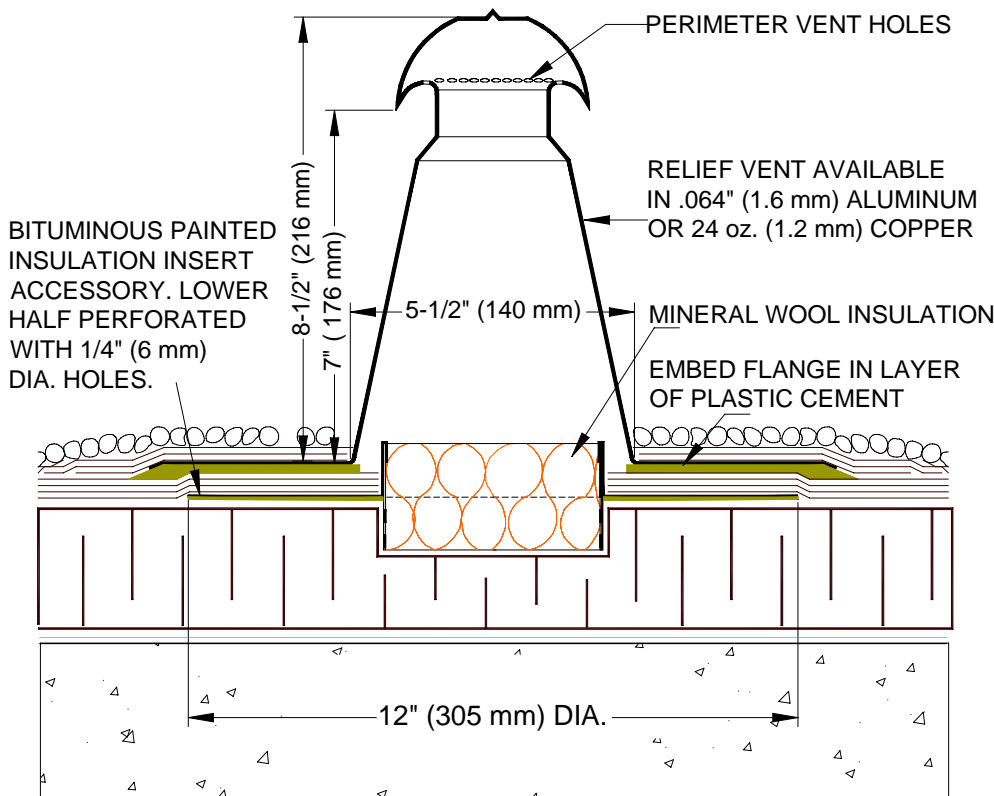
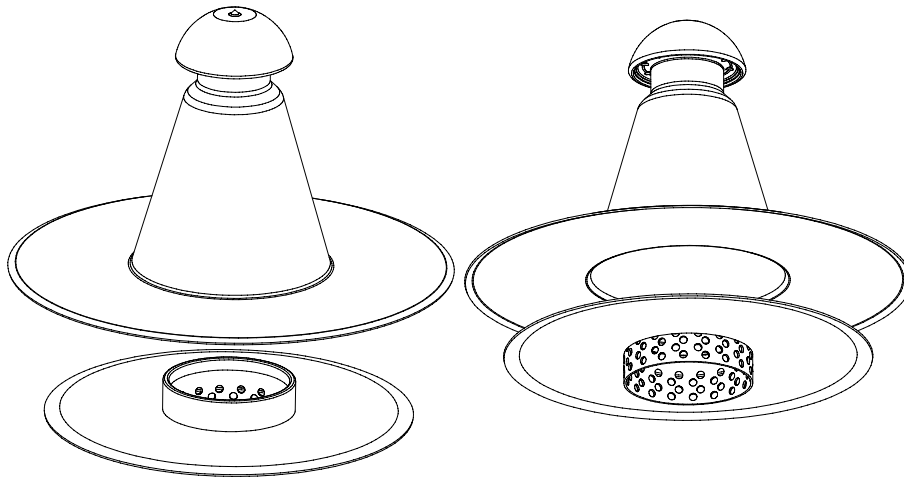


RV-1A/-RV-1C
RELIEF VENT



RV-1A ALUMINUM RELIEF VENT
RV-1C COPPER RELIEF VENT
PATENTED

INSTALLATION

"Installation Instructions" are provided with every Thaler product. Essentially, Thaler Relief Vents are installed at recommended spacing by first cutting out the insulation to a depth of 1" (25 mm) x 3-1/2" (89 mm) diameter to accommodate the insert accessory. Then place the insert, dry, over an insulation joint (I joint is best). Note: if using a channel vent insulation, cut insulation right through to channel vent.

BUR: Install membrane over *insert accessory* deck flange. Then set *relief vent* deck flange in layer of plastic cement over membrane and flash in with 3 overlapping layers of felt flashing.

ModBit: Install membrane over *insert accessory* deck flange. Torch membrane until bitumen is fluid and set *relief vent* deck flange into fluid. Flash in flange with two overlapping layers of ModBit and seal with asphalt sealer.

Single Ply: Install membrane over *insert accessory* deck flange and weld membrane to coated deck flange. Note: for PVC membrane, specify PVC coated deck flanges by adding suffix P to end of model number e.g. RV-1A-P; weld roofing to deck flange using PVC torch. Set *relief vent* deck flange in layer of membrane adhesive and flash in with single ply as per membrane manufacturer's recommendations.

Note: for EPDM, coat deck flanges on site with contact cement before torching membrane to both *insert accessory* and *relief vent* deck flanges.

Ordering and Availability: Specify flashing material required by adding appropriate suffix to model number e.g. RV-1A, for aluminum, etc. Available throughout North America. Contact Thaler for list of distributors and current cost information. Most products are readily available from stock.

DESCRIPTION

Thaler RV-1 Relief Vents consist of a metal vent with integral deck flange, and a specially designed insert accessory (filled with loose mineral wool insulation at factory) that aids in venting any moisture vapour accumulating in the roof assembly. Available in aluminum (RV-1A), and copper (RV-1C).

Spacing: One vent per 1000 sq. ft. (929 m²) of roof is recommended.

Prominent Features: Helps prevent ridging, buckling and blistering of roof membrane by permitting the escape of moisture vapour, other gases and their resultant pressure to the ambient air. Hood configuration facilitates draining of any condensation via the perimeter vent holes. Upstand on insert accessory acts as a "dam" in the event exterior water is able to penetrate membrane/deck flange interface. Helps keep insulation dry.

RECOMMENDED USE

Suitable for all flat/low slope roofs. Primarily designed for built up roofing (BUR) and modified bitumen roofing, or single ply roofs providing the deck flange has been treated for proper weld with the single ply e.g. PVC coated deck flange for PVC membrane or contact cement coated deck flange for EPDM membrane. Consult Thaler representative for other single plys.

WARRANTY

20 year warranty against defects in materials and/or manufacture when installed in accordance with Thaler "Installation Instructions". Copy of Warranty Certificate available upon request.

MAINTENANCE

No maintenance required (maintenance free).

SPECIFICATION (Short Form)

Relief vents: Thaler [RV-1A] [RV-1C] relief vent consisting of [.051" (1.4 mm) mill finish 1100-0T alloy aluminum] [24 oz. (1.2 mm) copper] with perimeter vent holes and .051" (1.4 mm) aluminum insulation insert accessory having loose mineral wool filler and lower half perforated with 1/4" (6 mm) dia. holes; 8-1/2" (216 mm) high; [bituminous painted deck flanges] [PVC coated deck flanges] [plain deck flanges]; manufactured by Thaler Metal Industries, 1-800-387-7217 (Mississauga, Ontario, Canada) or 1-800-576-1200 (Niagara Falls, NY), installed as per manufacturer's written instructions. Provide 20 year warranty against defects in materials and/or manufacture.

RV-2A/-RV-2C
RELIEF VENT

DESCRIPTION

Thaler RV-2 Relief Vents consist of a metal vent with integral deck flange, removable conical hood fitted with perforated collar, thick premolded urethane insulation, and a specially designed insulation insert accessory (filled with loose mineral wool insulation at factory) that aids in venting any moisture vapour accumulating in the roof assembly. Available in aluminum (RV-2A), and copper (RV-2C).

Spacing: One vent per 1000 sq. ft. (929 m²) of roof is recommended.

Prominent Features: Helps prevent ridging, buckling and blistering of roof membrane by permitting the escape of moisture vapour, other gases and their resultant pressure to the ambient air. Hood configuration facilitates draining of any condensation via the perimeter vent holes (note: insulated sleeve is superior to RV-1 vents with regard to preventing condensation). Upstand on insert accessory acts as a "dam" in the event exterior water is able to penetrate membrane/deck flange interface. Helps keep insulation dry. Hood is removable for checking vent space condition e.g. dryness of roof or presence of moisture. Perforated collar prevents the entry or nesting of birds etc.

RECOMMENDED USE

Suitable for all flat/low slope roofs. Primarily designed for built up roofing (BUR) and modified bitumen roofing, or single ply roofs providing the deck flange has been treated for proper weld with the single ply. e.g. PVC coated deck flange for PVC membrane or contact cement coated deck flange for EPDM membrane. Consult Thaler representative for other single plys.

WARRANTY

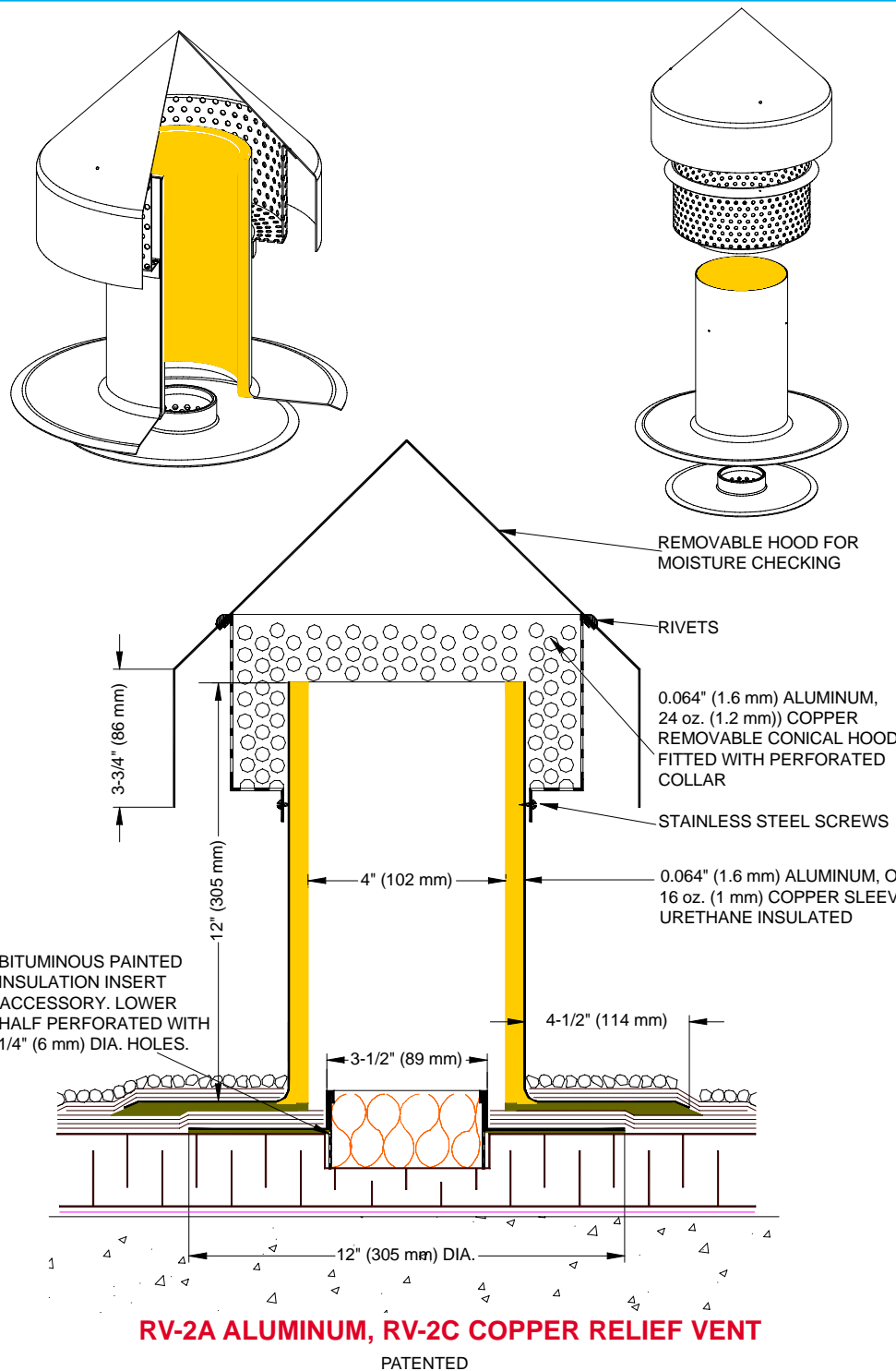
20 year warranty against defects in materials and/or manufacture when installed in accordance with Thaler "Installation Instructions". Copy of Warranty Certificate available upon request.

MAINTENANCE

No maintenance required (maintenance free).

SPECIFICATION (Short Form)

Relief vents: Thaler [RV-2A] [RV-2C] standard 12" (305 mm) high, 4" (102 mm) I.D., relief vent consisting of [.064" (1.6 mm) mill finish 1100-OT alloy aluminum] [16 oz. (1 mm) copper] [24 oz. (1.2 mm) copper for hood] integral deck flange, removable conical hood fitted with perforated collar, thick premolded urethane insulation and .051 (1.4 mm) aluminum insulation insert accessory having loose mineral wool filler and lower half perforated with 1/4" (6 mm) dia. holes; [bituminous painted deck flanges][PVC coated deck flanges][plain deck flanges]; manufactured by Thaler Metal Industries, 1-800-387-7217 (Mississauga, Ontario, Canada) or 1-800-576-1200 (Niagara Falls, NY), installed as per manufacturer's written instructions. Provide 20 year warranty against defects in materials and/or manufacture.



INSTALLATION

"Installation Instructions" are provided with every Thaler product. Essentially, Thaler Relief Vents are installed at recommended spacing by first cutting out the insulation to a depth of 1" (25 mm) x 3-1/2" (89 mm) diameter to accommodate the insert accessory. Then place the insert, dry, over an insulation joint (T joint is best). Note: if using a channel vent insulation, cut insulation right through to channel vent.

BUR: Install membrane over *insert accessory* deck flange. Set *relief vent* deck flange in layer of plastic cement over membrane and flash in with 3 overlapping layers of felt flashing.

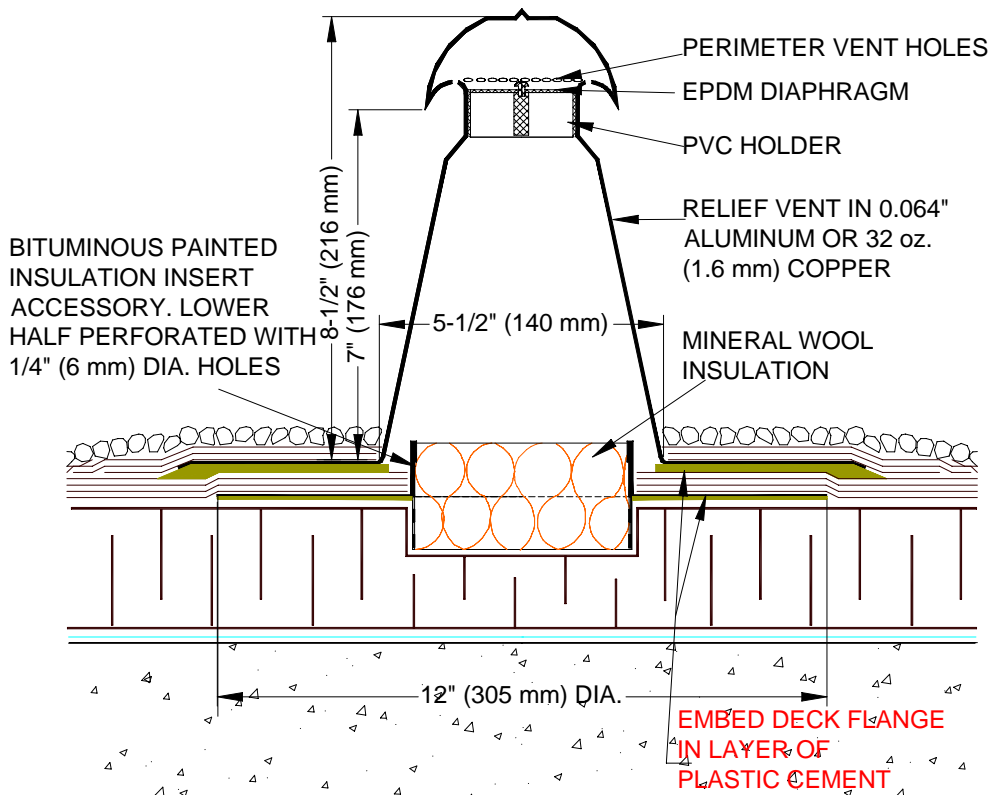
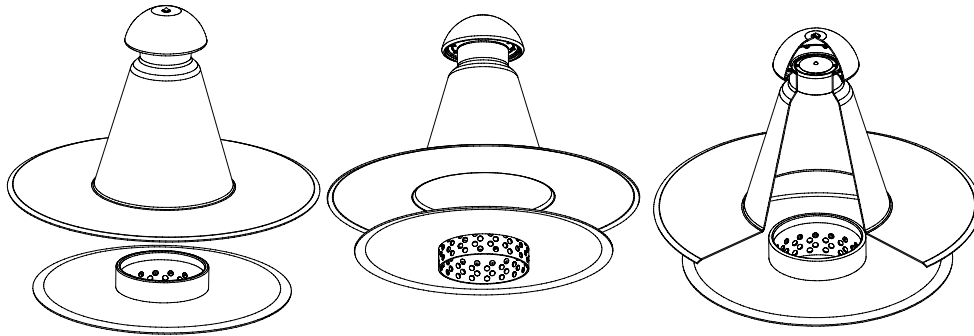
ModBit: Install membrane over *insert accessory* deck flange. Torch membrane until bitumen is fluid and set *relief vent* deck flange into fluid. Flash in flange with two overlapping layers of ModBit and seal with asphalt sealer.

Single Ply: Install membrane over *insert accessory* deck flange and weld membrane to coated deck flange. Note: for PVC membrane, specify PVC coated deck flanges by adding suffix P to end of model number e.g. RV-2A-P; weld roofing to deck flange using PVC torch. Set *relief vent* deck flange in layer of membrane adhesive and flash in with single ply as per membrane manufacturer's recommendations.

Note: for EPDM, coat deck flanges on site with contact cement before torching membrane to both *insert accessory* and *relief vent* deck flanges.

Ordering and Availability: Specify flashing material required by adding appropriate suffix to model number e.g. RV-2A, for aluminum, etc. Available throughout North America. Contact Thaler for list of distributors and current cost information. Most products are readily available from stock.

RV-3A/-RV-3C
ONE WAY
RELIEF VENT



RV-3A ALUMINUM ONE WAY RELIEF VENT
RV-3C COPPER ONE WAY RELIEF VENT

PATENTED

INSTALLATION

"Installation Instructions" are provided with every Thaler product. Essentially, Thaler Relief Vents are installed at recommended spacing by first cutting out the insulation to a depth of 1" (25 mm) x 3-1/2" (89 mm) diameter to accommodate the insert accessory. Then place the insert, dry, over an insulation joint (I joint is best). Note: if using a channel vent insulation, cut insulation right through to channel vent.

BUR: Install membrane over *insert accessory* deck flange. Then set *relief vent* deck flange in layer of plastic cement over membrane and flash in with 3 overlapping layers of felt flashing.

ModBit: Install membrane over *insert accessory* deck flange. Torch membrane until bitumen is fluid and set *relief vent* deck flange into fluid. Flash in flange with two overlapping layers of ModBit and seal with asphalt sealer.

Single Ply: Install membrane over *insert accessory* deck flange and weld membrane to coated deck flange. Note: for PVC membrane, specify PVC coated deck flanges by adding suffix P to end of model number e.g. RV-3A-P; weld roofing to deck flange using PVC torch. Set *relief vent* deck flange in layer of membrane adhesive and flash in with single ply as per membrane manufacturer's recommendations.

Note: for EPDM, coat deck flanges on site with contact cement before torching membrane to both *insert accessory* and *relief vent* deck flanges.

Ordering and Availability: Specify flashing material required by adding appropriate suffix to model number e.g. RV-1A, for aluminum, etc. Available throughout North America. Contact Thaler for list of distributors and current cost information. Most products are readily available from stock.

DESCRIPTION

Thaler RV-3 Relief Vents consist of a metal vent with integral deck flange, PVC holder with EPDM diaphragm, and a specially designed insert accessory (filled with loose mineral wool insulation at factory) that aids in venting any moisture vapour accumulating in the roof assembly. Available in aluminum (RV-3A), and copper (RV-3C).

Spacing: One vent per 1000 sq. ft. (929 m²) of roof is recommended.

Prominent Features: Helps prevent ridging, buckling and blistering of roof membrane by permitting the escape of moisture vapour, other gases and their resultant pressure to the ambient air. Hood configuration facilitates draining of any condensation via the perimeter vent holes. Upstand on insert accessory acts as a "dam" in the event exterior water is able to penetrate membrane/deck flange interface. Helps keep insulation dry.

RECOMMENDED USE

Suitable for all flat/low slope roofs. Primarily designed for built up roofing (BUR) and modified bitumen roofing, or single ply roofs providing the deck flange has been treated for proper weld with the single ply e.g. PVC coated deck flange for PVC membrane or contact cement coated deck flange for EPDM membrane. Consult Thaler representative for other single plys.

WARRANTY

20 year warranty against defects in materials and/or manufacture when installed in accordance with Thaler "Installation Instructions". Copy of Warranty Certificate available upon request.

MAINTENANCE

No maintenance required (maintenance free).

SPECIFICATION (Short Form)

Relief vents: Thaler [RV-3A] [RV-3C] relief vent consisting of [.064" (1.6 mm) mill finish 1100-OT alloy aluminum] [24 oz. (1.2 mm) copper] with perimeter vent holes, EPDM diaphragm with PVC holder, and .051 (1.4 mm) aluminum insulation insert accessory having loose mineral wool filler and lower half perforated with 1/4" (6 mm) dia. holes; 8-1/2" (216 mm) high; [bituminous painted deck flanges] [PVC coated deck flanges] [plain deck flanges]; manufactured by Thaler Metal Industries, 1-800-387-7217 (Mississauga, Ontario, Canada) or 1-800-576-1200 (Niagara Falls, NY), installed as per manufacturer's written instructions. Provide 20 year warranty against defects in materials and/or manufacture.